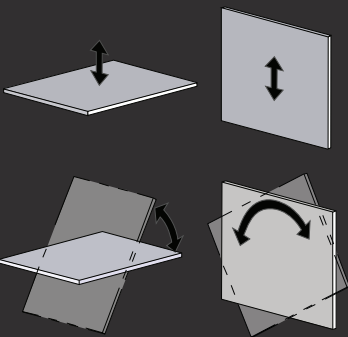


WOOD'S POWR-GRIP® MANUAL ROTATOR/TILTER WITH DC3 DUAL VACUUM SYSTEM

MRT411LDC3
700 lbs [320 kg]



Employing state-of-the-art technology, *Intelli-Grip™* automatically monitors vacuum and power systems to:

- Maximize productivity
- Help reduce human error
- Simplify maintenance and repairs
- Protect employees and property from harm



	MRT411LDC3
Maximum Load Capacity	700 lbs [320 kg]
Intelli-Grip™ Technology	Automatic self-testing ensures lifter is ready for use, every lift. Color display provides critically relevant information at a glance. Anticipates threats and alerts operator beforehand with clearly visible and audible warnings. Smart power management enables lifter to work longer on a single charge. Continuously monitors battery and prevents lifter from attaching to loads if energy is hazardously low. Multiple alarm levels plainly identify the severity of hazards.
Load Movement	Manual rotation, 360° edgewise, with automatic latching every 90° Manual tilt, 90° between upright and flat, with automatic latching in upright position
Standard Operating Power	12 volts DC, 5 amps
Standard Features	Intelli-Grip™ technology Dual vacuum system High-flow vacuum pump Battery and charger Battery energy gauge Low vacuum warning buzzer Power loss warning buzzer Green lift light Vacuum gauges Vacuum line filters Vacuum reserve tanks Spring-mounted vacuum pads Movable pad mounts Pad extension arms Blow-off for quick release Two-action, push-button release
Available Options	Remote control system (59906AM) Forklift adapter (95722) Adaptable length lift bar (95723) Long extension arms (95725) Individual pad shutoffs (93011) Extensions for movable pad mounts (93101 & 93101AM) Pad frame T-arm assemblies (97466) MRT4 Shipping case (53006) Alternative pad compounds, including ones for low-marking, temperature resistant and coated surface applications (special order)
Dual Vacuum System	Features two completely independent vacuum circuits. Provides vacuum system redundancy. Limits possibility of a catastrophic failure. Reduces chance of harm to personnel or equipment.



ALWAYS IN MOVEMENT

Erhvervsparken 2
9500 Hobro
Danmark
Tlf. : 0045 98576060

www.jlmteknik.dk



Wood's Powr-Grip products are sold through authorized dealers.

MRT411LDC3

Standard Pad Spread

Basic Configuration:	28 $\frac{1}{4}$ " x 32 $\frac{3}{4}$ " [72 x 83 cm]
Extended Configuration:	48 $\frac{1}{4}$ " x 67 $\frac{1}{2}$ " [123 x 172 cm]
Linear Configuration:	78 $\frac{1}{4}$ " x 15 $\frac{3}{4}$ " [199 x 40 cm]

Number / Size of Pads

4 / 11" [28 cm] dia. lipped

Lifter Weight

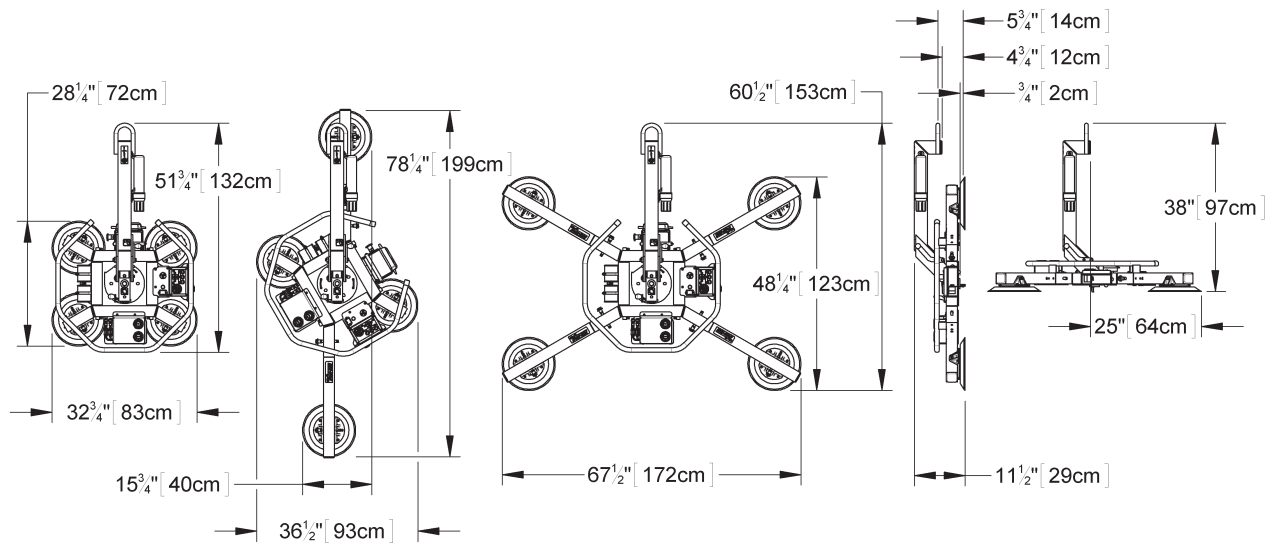
125 lbs [57 kg]

Design Standards

ASME B30.20
(BTH-1 Design Category "B", Service Class "0")
CE
AS 4991

(See www.WPG.com for more information.)

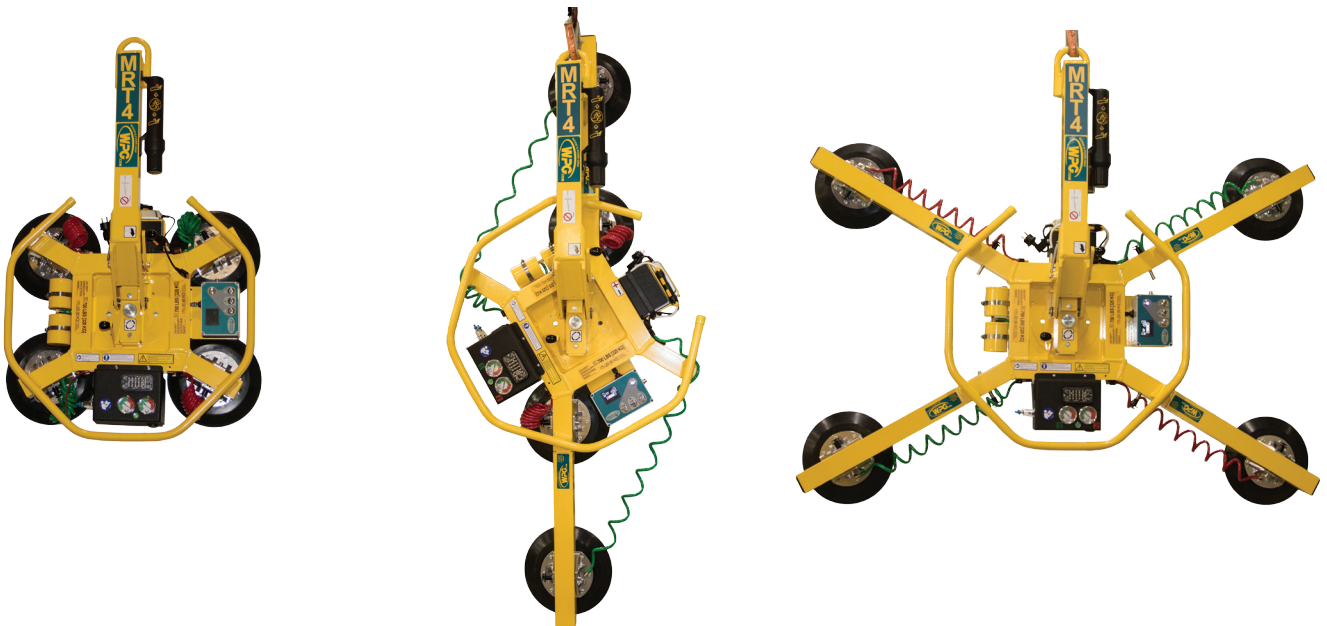
Environmental conditions can affect product performance and longevity; consult the product instructions on WPG.com or contact a Technical Sales Representative for more information. Based on product information at time of publication.



Basic Configuration

Linear Configuration

Extended Configuration

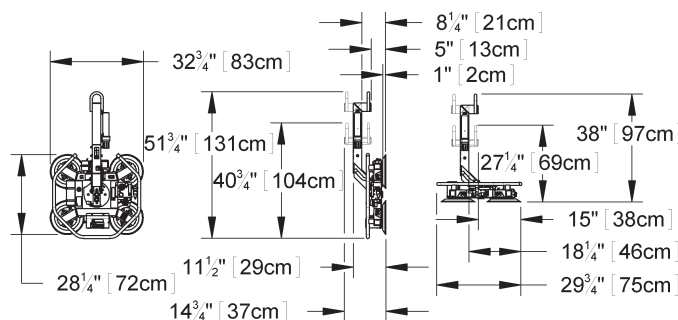
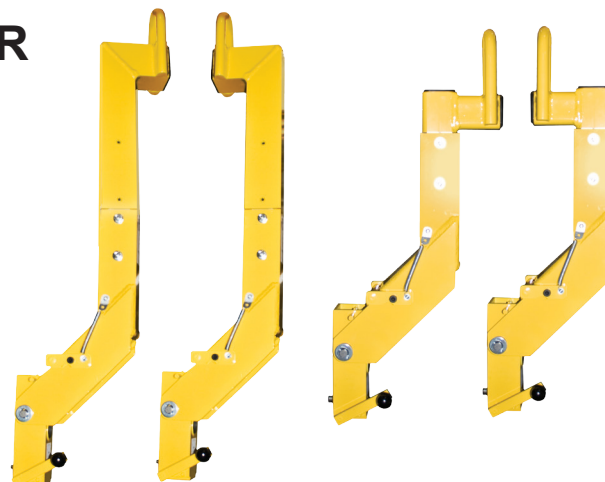


MRT OPTIONS

ADAPTABLE LENGTH LIFT BAR

Designed for applications requiring increased horizontal reach at the hook point or applications involving minimal clearance between the lifter and the hoisting equipment, such as installations under eaves or similar handling situations.

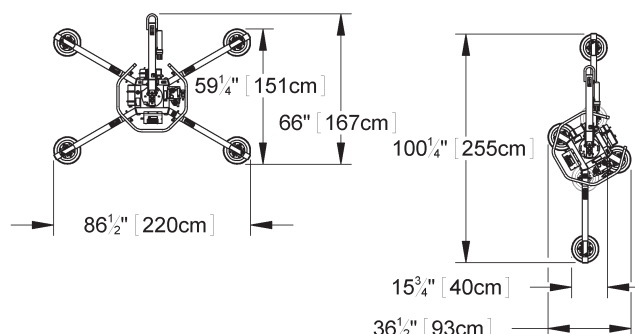
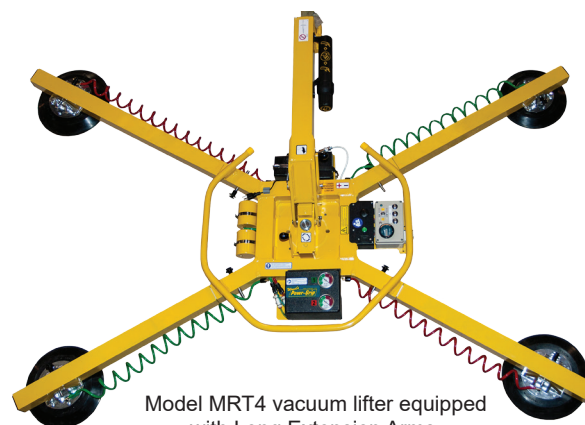
Overhead Clearance Reduction	11-3/4" [298 mm] with Shortened Configurations
Horizontal Reach Increase	7-5/8" [193 mm] with Reversed Bail Configurations
Maximum Load Capacity*	<p>Standard Configuration: 700 lbs [320 kg]</p> <p>Reversed Bail Configuration: 600 lbs [270 kg]</p> <p>Shortened Configuration: 650 lbs [295 kg]</p> <p>Shortened, Reversed Bail Configuration: 500 lbs [225 kg]</p> <p>*Net capacity cannot exceed standard lifter capacity.</p>
Lifter Weight Increase	10 lbs [5 kg]



LONG EXTENSION ARMS

Designed for applications requiring a larger pad spread to reduce overhang on large loads.

Maximum Load Capacity	500 lbs [225 kg] (with long arms installed)
Lifter Weight Increase	10 lbs [5 kg]



Pad Spread Dimensions provided are for MRT411LDC.

For MRT49DC, subtract 2-3/4" [7 cm]

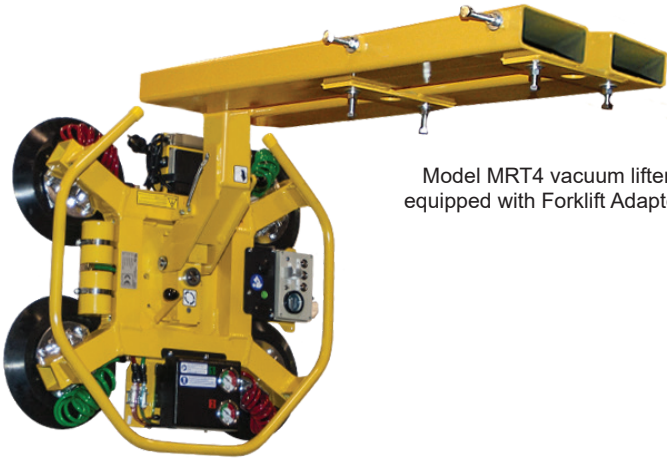
For MRT4HV11DC, subtract 1-3/4" [5 cm]

FORKLIFT ADAPTER

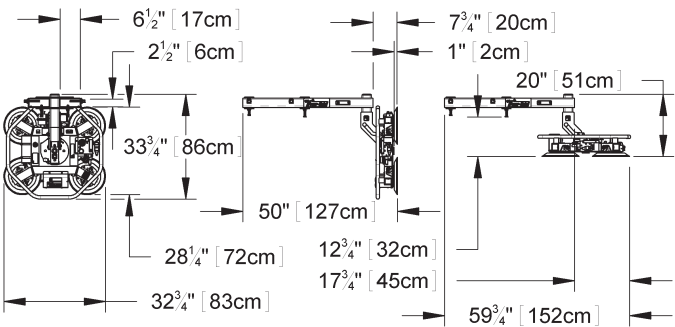
Designed for applications where a forklift is desired, such as installations under eaves and commercial, indoor applications, where using a crane is not possible.

Compatible Fork Dimensions	1-1/2" to 2-1/4" [38-57 mm] thick and 4" to 6" [102-152 mm] wide
Inside Fork Spread	4" [102 mm]
Maximum Load Capacity	700 lbs [320 kg] when used on MRT411LDC*
Maximum Load Thickness	1" [25 mm] at full capacity
Lifter Weight Increase	130 lbs [59 kg]

*The forklift must have sufficient capacity for the combined weight of the lifter and its maximum load when the load is located 8-3/4" [222 mm] outward from the fork tips or 50-3/4" [1289 mm] outward from the fork stops, whichever places the load at a greater distance from the forklift's front wheels.



Model MRT4 vacuum lifter equipped with Forklift Adapter.



SHIPPING CASE FOR MRT VACUUM LIFTER (VACUUM LIFTER AND CASE SOLD SEPARATELY)

- Designed specifically for shipping and storing Powr-Grip® MRT4 Vacuum Lifters.
- Made from 100% recycled HDPE plastic, features twin sheet, thermo-formed construction, making it very durable, as well as water-resistant.
- Special area to house extension arms for these lifters.
- Internal nylon straps to hold the lifter and extension arms firmly in place, preventing them from rattling around while in transit.
- Exterior rubber straps to hold the case securely closed during shipping.
- Handles molded into the case enable convenient handling.
- Mounting points inside the lid of the case enable the hanging of up to 4 extra vacuum pads.
- Ribbed exterior of case specifically designed for easy stacking of multiple lifters (up to 4).
- Wheels on one end make short distance movement of the lifter manageable by one individual.
- Grooves on the bottom of the case facilitate forklift handling from all four sides.

