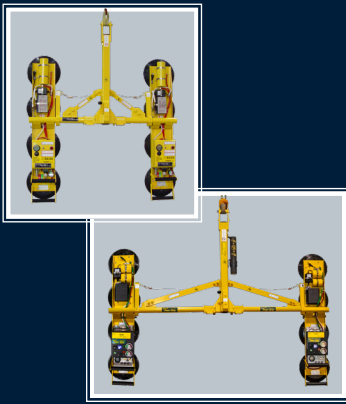
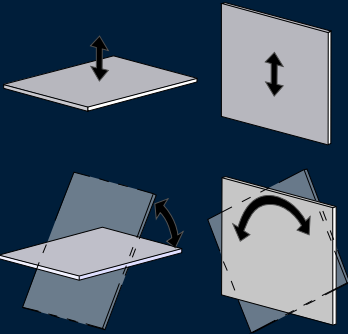


WOOD'S POWR-GRIP® P2 LIFTER SERIES WITH DC3 DUAL VACUUM SYSTEM



P2110445DC3
P211047DC3

1400 lbs [635 kg]



Employing state-of-the-art technology, **Intelli-Grip®** automatically monitors vacuum and power systems to:

- Maximize productivity
- Help reduce human error
- Simplify maintenance and repairs
- Protect employees and property from harm



Maximum Load Capacity	1400 lbs [635 kg]
Intelli-Grip® Technology	Automatic self-testing ensures lifter is ready for use, every lift. Color display provides critically relevant information at a glance. Anticipates threats and alerts operator beforehand with clearly visible and audible warnings. Continuously monitors battery and prevents lifter from attaching to loads if energy is hazardously low. Multiple alarm levels plainly identify the severity of hazards.
Load Movement	Manual rotation, 180° edgewise, with locking at each 1/4 turn Manual tilt, 90° between upright and flat, with automatic latching in upright position (in center rotation position, as shown on drawings)
Standard Operating Power	12 volts DC, 5 amps (for each Pad Channel)
Standard Features (for each Pad Channel)	Intelli-Grip® Technology Dual vacuum system High-flow vacuum pump Battery and charger Battery energy gauge Low vacuum strobe light Low vacuum/power loss warning buzzer with back-up battery Green lift light Vacuum gauges Vacuum line filters Vacuum reserve tanks Blow-off for quick release Two-action, push-button release
Available Options	Alternative vacuum pads (Specifications not as listed above. Please contact us for more information): 9" [23 cm] diameter pad (VPFS9) 10" [25 cm] diameter pad with replaceable sealing ring (VPFS10T) Alternative pad compounds for low-marking, temperature resistant and coated surface applications (special order) Counterbalance Lifter (CB2DCS) Single vacuum system (P21104-DC)
Dual Vacuum System (for each Pad Channel)	Features two completely independent vacuum circuits. Provides vacuum system redundancy. Limits possibility of a catastrophic failure. Reduces chance of harm to personnel or equipment.



ALWAYS IN MOVEMENT

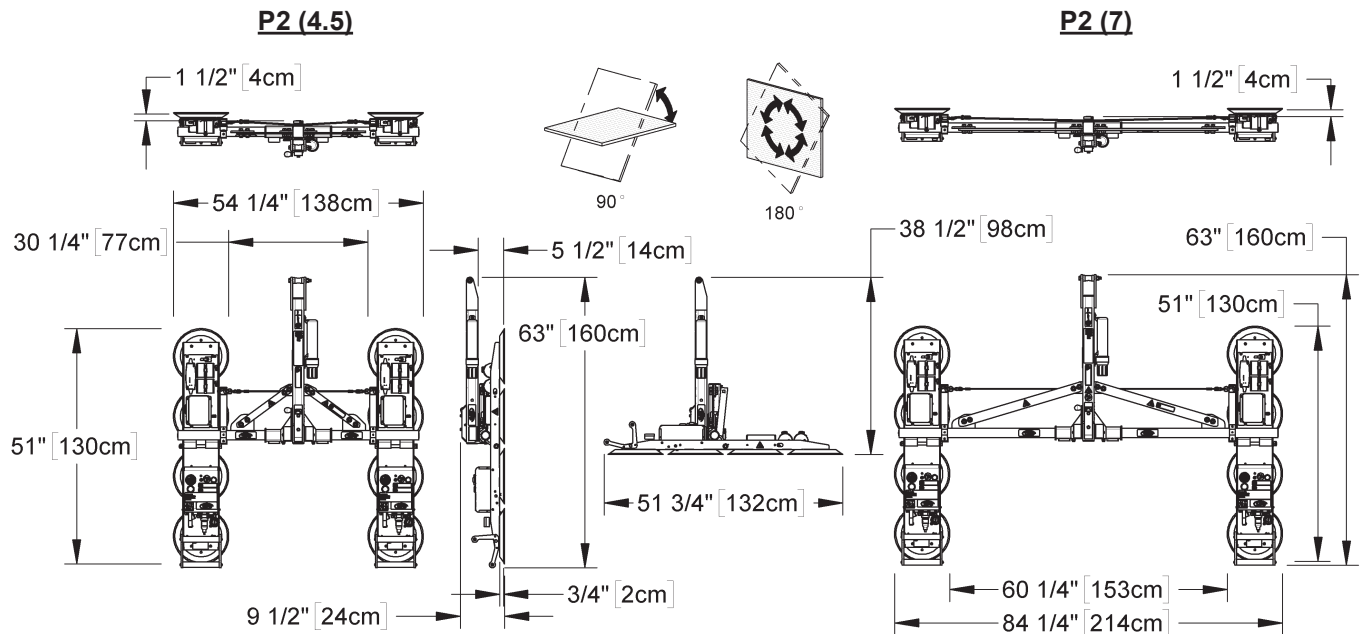
Erhvervsparken 2
9500 Hobro
Danmark
Tlf. : 0045 98576060

www.jlmteknik.dk

JLMteknik is a proud Distributor of Wood's Powr-Grip products.

Number / Size of Pads	8 / 11" [28 cm] dia. lipped
Standard Pad Spread	P2110445DC3: 51" x 54¼" [130 x 138 cm] P211047DC3: 51" x 84¼" [130 x 214 cm]
Lifter Weight	P2110445DC3: 195 lbs [88 kg] P211047DC3: 205 lbs [93 kg]
Design Standards	ASME B30.20 (BTH-1 Design Category "B", Service Class "0") CE AS 4991 (See www.WPG.com for more information.)
Based on product information at time of publication. Environmental conditions can affect product performance and longevity; consult the product instructions on WPG.com or contact a Technical Sales Representative for more information.	

Channel Lifters are comprised of one or more Pad Channels and interchangeable Lift Frames for manually rotating and tilting materials. They may be ordered as complete units or as individual components to expand existing Channel Lifter systems. Lift Frames are available in single-channel or double-channel styles. Pad Channels can be switched from one frame to another in minutes.



COMPONENTS:

Pad Channels

Each channel features an independent, vacuum generating system, including vacuum pump, vacuum controls and standard features as listed on page 1.

PC1104DC3S: (for flat materials) 4 / 11" [28 cm] dia. lipped pads (94137, 94137CE, 94137JP)

PC10C04DC3S: (for curved materials) 4 / 10" [25 cm] dia. concave pads (special order)

Lift Frames

PCFT1A1: For one Pad Channel (94154)

PCFT2SA45: For two Pad Channels, approx. 4½' [1.38 m] pad spread (94165)

PCFT2SA7: For two Pad Channels, approx. 7' [2.14 m] pad spread (94170)

Interchangeable Arms

(Pad spread can be changed if optional arms are purchased)

FA245: Optional arms convert PCFT2SA7 Lift Frame to PCFT2SA45 Lift Frame (57222AM)

FA27: Optional arms convert PCFT2SA45 Lift Frame to PCFT2SA7 Lift Frame (57223AM)