







Index

Who is JLM teknik?	4
Aluminum rails.....	5-6
Rail connector.....	7
Endplate.....	8
Rail reinforcement.....	9
Trolleys.....	10
Floating suspension.....	11
Trolley for hoists.....	12
Cable and hose trolleys.....	13
End stops	14
Vacuum hoses and cables.....	15
Rafter brackets	
Brackets for Mini, Mega and Maxi rails.....	20
Brackets for Magnum.....	21
Brackets for concrete rafters.....	22
Uni-suspension	23
Fishplate, ceiling mount and adjustable suspension.....	24
Bracket for C-profile (swan neck).....	25
Angles	26
Brackets	27
Terms and conditions	28-29
Quoteform.....	30-31
Contact information	32

Who is JLM teknik?

**We make your everyday life easier
– that is a promise!**

JLM Teknik is a well-consolidated, privately owned Danish company that since 1997 has been a supplier of complete handling solutions for all types of industries in Denmark and internationally.

We have over the years developed our own running crane system, that easily can be assembled to fit the costumers requirements. The crane system is easy to install directly in the ceiling or bolt onto the rafters. The crane system can also be installed on the floor, using columns.

The crane system have been further developed from the beginning, and today we have maybe the best crane system on the market.

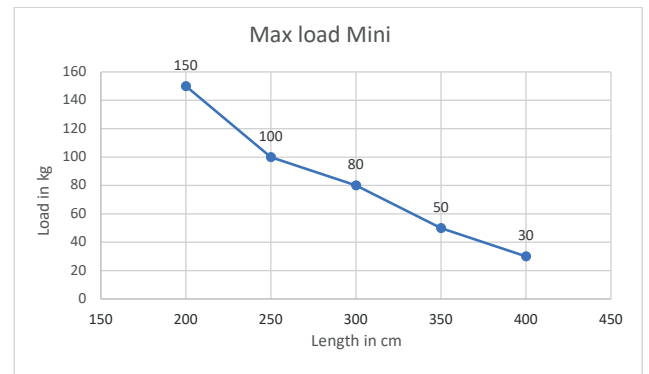
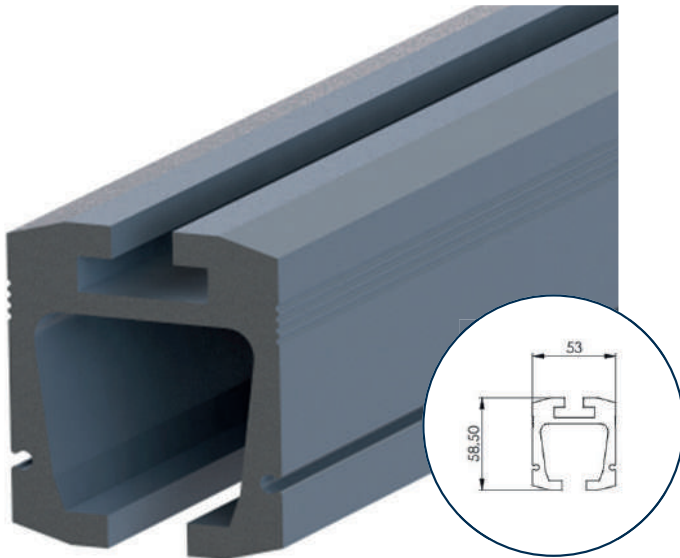
Advantages of the JLM crane system:

- Quality product with up to 5 years warranty
- Incredibly easy to install by the technicians
- The crane system only uses bolts. No welding is necessary
- The crane system can easily be modified after installation, or even moved to a new location
- All wagons and trolleys use ball bearings and stainless POM wheels

The crane system complies with EN 16854:2017

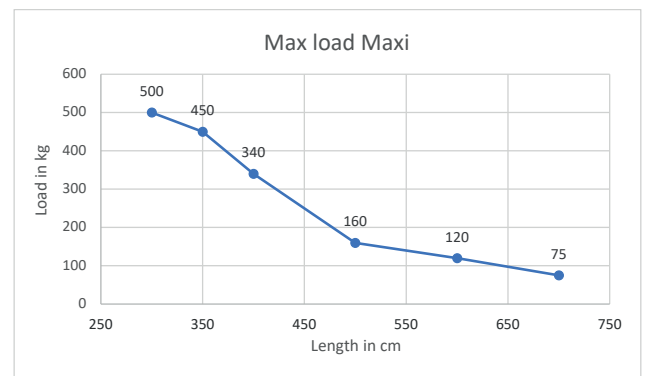
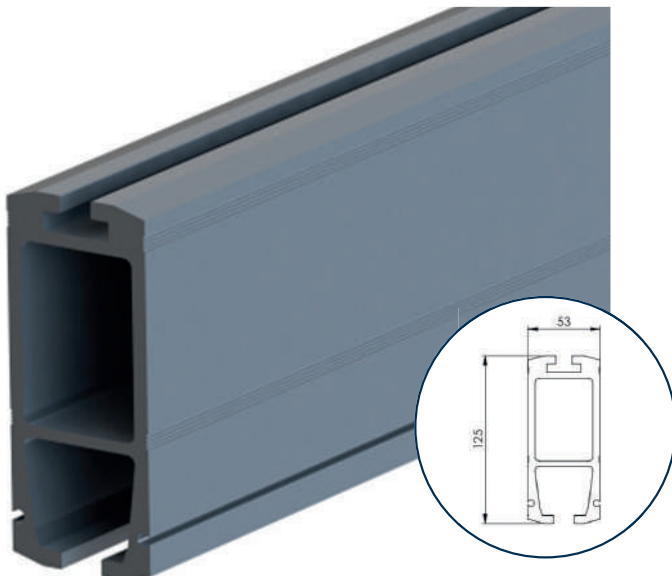


Aluminum rails Mini and Maxi



The Mini rail is anodized and delivered in 6 meter lengths. The maximum overhang on this rail is 500 mm

Description	Inventory no.	Unit	Weight in kg
Mini rail 6m	L12140	Piece.	20,4

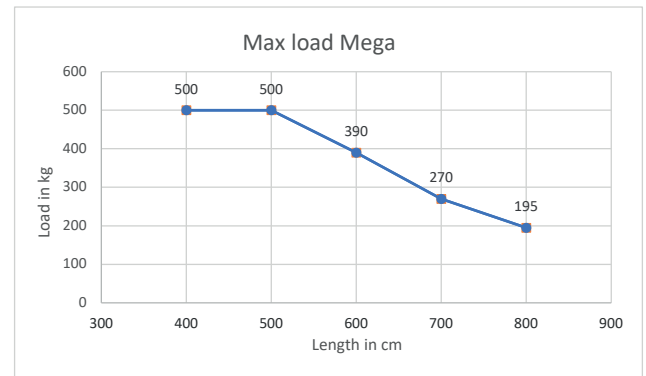
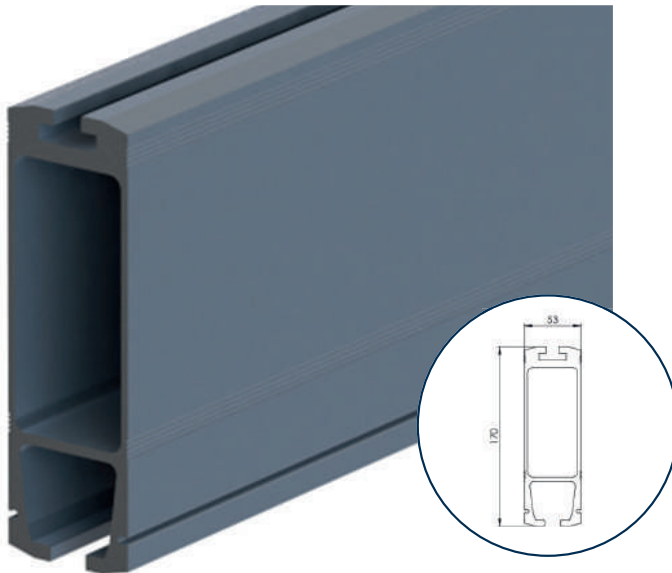


The Maxi rail is anodized and delivered in 6 and 8 meter lengths.

The maximum overhang on this rail is 500 mm.

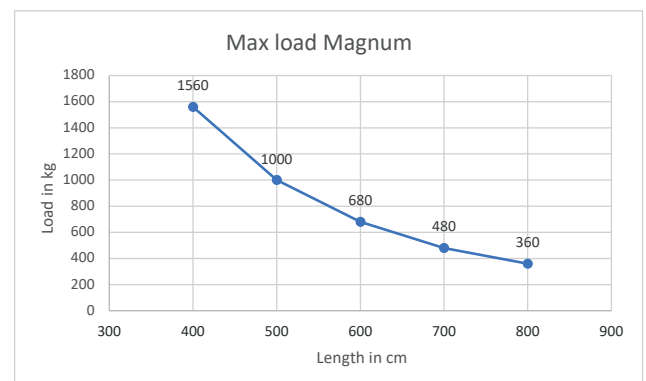
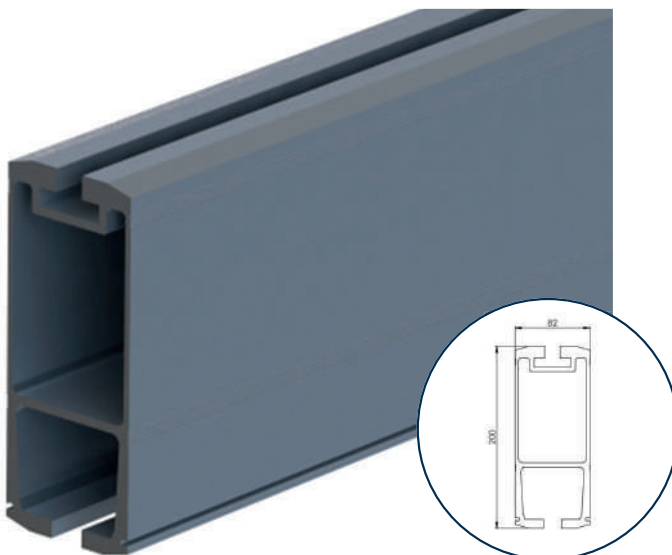
Description	Inventory no.	Unit	Weight in kg
Maxi rail 6m	L12180	Piece.	29,4
Maxi rail 8m	L12190	Piece.	39,2

Aluminum rails Mega and Magnum



The Mega rail is anodized and delivered in 6 and 8 meter lengths. The maximum overhang on this rail is 500 mm.

Description	Inventory no.	Unit	Weight in kg
Mega rail 6m	L12194	Piece.	39
Mega rail 8m	L12195	Piece.	52



The Magnum rail is anodized and delivered in 6 and 8 meter lengths. The maximum overhang on this rail is 500 mm.




Description	Varenummer	Unit	Weight in kg
Magnum rail 6m	L12206	Piece.	60
Magnum rail 8m	L12208	Piece.	80

Rail connector

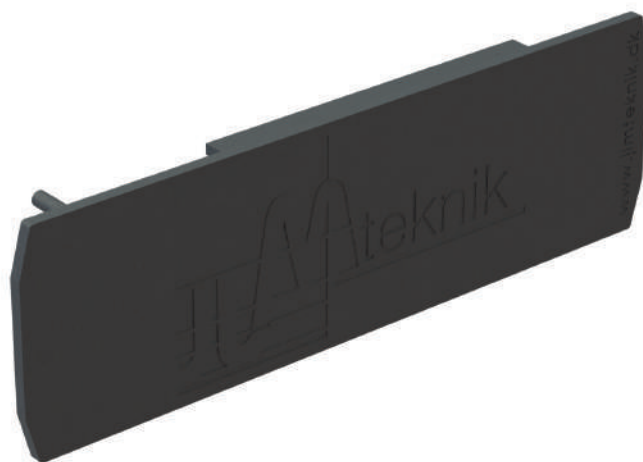


Example of a rail connector in a crane system.

Attention: The rail connector cannot be more than 500 mm from a suspension!

Description	Inventory no.	Fits on	Unit	Weight in kg	
Rail connector	L0510050132	Mini	Piece.	1,1	
Rail connector	L0510050070	Mega and Maxi	Piece.	4,2	
Rail connector	L151037014	Magnum	Piece.	12,8	

End plate



The end plate protects the rail and gives a nice finish to the crane system.

Description	Inventory no.	Fits on	Unit
End plate, 53 x 57 mm	L9999	Mini	Piece.
End plate, 53 x 125 mm	L9998	Maxi	Piece.
End plate, 53 x 170 mm	L9997	Mega	Piece.
End plate, 82 x 200 mm	L9996	Magnum	Piece.



Rail reinforcement



If the rails are to be used for higher loads than they are rated for, the rail reinforcement can be installed. In systems with more than one girder, it is important to pay attention to the total load to the running rails, when the girders are close to each other. Contact JLM teknik for more information on rail reinforcement.

Description	Inventory no.	Fits on	Unit	Weight in kg
Rail reinforcement for 6 meter rails. Total length = 5020 mm	L0510050160	Mega and Maxi	Piece.	13,5
Rail reinforcement for 8 meter rails. Total length = 6635 mm	L0510050240	Mega and Maxi	Piece.	21,2
Rail reinforcement for 6 meter rails. Total length = 5075 mm	L151037021	Magnum	Piece.	20,6
Rail reinforcement for 8 meter rails. Total length = 6680 mm	L151037037	Magnum	Piece.	26,3












Trolleys



Example of a double trolley.



Example of a trolley for a crane system with double girders.

Description	Inventory no.	Fits on	Unit	Weight in kg	
Trolley with one wing 250 kg.	L0510050215	Mini, Maxi, Mega	Piece.	2,1	
Trolley, standard 250 kg.	L0510050200	Mini, Maxi, Mega	Piece.	2,1	
Trolley tandem for double girders	L151037015	Magnum	Piece.	10,6	
Trolley tandem with one wing	L0510050217	Mini, Maxi, Mega	Piece.	3,7	
Trolley tandem 1500 kg.	L151037013	Magnum	Piece.	8,1	
Trolley tandem 500 kg.	L0510050205	Mini, Maxi, Mega	Piece.	3,8	
Trolley tandem for double girders	L0510050222	Mini, Maxi, Mega	Piece.	5,2	
Trolley for girder extension	L0510050200B	Mini, Maxi, Mega	Piece.	2,3	
Trolley standard	L151037028	Magnum	Piece.	2,1	
Trolley for girder extension	L15103703	Magnum	Piece.	3,6	
Trolley tandem with one wing for double girders	L0510050227	Mini, Maxi, Mega	Piece.	5,5	

Floating suspension

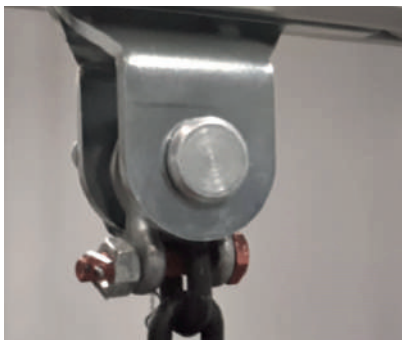


The floating suspension is typically used for vacuum lifters or electrical hoists with a light load. The floating suspension allows the girder to move more freely and not necessarily perpendicular to the running rails. The maximum recommended span of the girder with floating suspension is 5 meters.

When the load exceeds 100 kg, floating suspension is not recommended. Also note, that when floating suspension is used, the number of attachment points to the running rails must be double that of a normal crane system. This makes the crane system more rigid.

Description	Inventory no.	Fits on	Unit	Weight in kg	
Floating suspension 150 kg	L0510050097	Mini, Maxi and Mega	Piece.	1,2	
Floating suspension 400 kg	L0510050139	Mini, Maxi and Mega	Piece.	2,7	

Trolley for hoist



Description	Inventory no.	Fits on	Unit	Weight in kg	
Trolley for hoist, 100 kg (alloy)	L0510050028	Mini, Maxi, Mega	Piece.	0,3	
Double trolley for hoist 1500 kg	L15103708	Magnum	Piece.	6,5	
Trolley 250 kg. Hoist/ Vacuum hose	L0510050248	Mini, Maxi, Mega	Piece.	0,7	
Trolley 500 kg.	L0510050013	Mini, Maxi, Mega	Piece.	2,1	
Trolley 750 kg.	L15103702	Magnum	Piece.	2,0	
Trolley for double girder and vacuum lifter, 60 kg	L0510050253	Mini, Maxi, Mega	Piece.	2,9	
Trolley 750 kg	L151037033	Magnum	Piece.	1,9	
Trolley for double girder, 500 kg	L0510050266	Mini, Maxi, Mega	Piece.	15	
Trolley for double girder, 1000 kg	L151037051	Magnum	Piece.	18	

Cable and hose trolleys



Example of a hose support trolley.



Example of a cable support trolley.






Description	Inventory no.	Unit	Weight in kg	Fits to	
Cable trolley 204	L0510050204-1	Piece.	0,2	Mini, Maxi, Mega	
Cable trolley	L15103707	Piece.	0,2	Magnum	
Hose trolley 204	L0510050204-2	Piece.	0,2	Mini, Maxi, Mega	
Hose trolley	L15103706	Piece.	0,2	Magnum	

End stop



Example of an end stop with a strap.

Ende stop is always mounted with a rubber bumper. The bolts in the end stops always have to be tightened to 25 nm.

Description	Inventory no.	Fits on	Unit	Weight in kg	
Complete end stop	L0510050021	Mini, Maxi og Mega	Piece.	0,2	
Complete end stop for strap	L15103705	Magnum	Piece.	0,8	
End stop complete with strap	L0510050101	Mini, Maxi og Mega	Piece.	0,3	
Complete end stop	L15103704	Magnum	Piece.	0,7	
End stop for straps	L0510050101-2	Mini, Maxi og Mega	Piece.	0,3	

Vacuum hoses and cables in the crane system

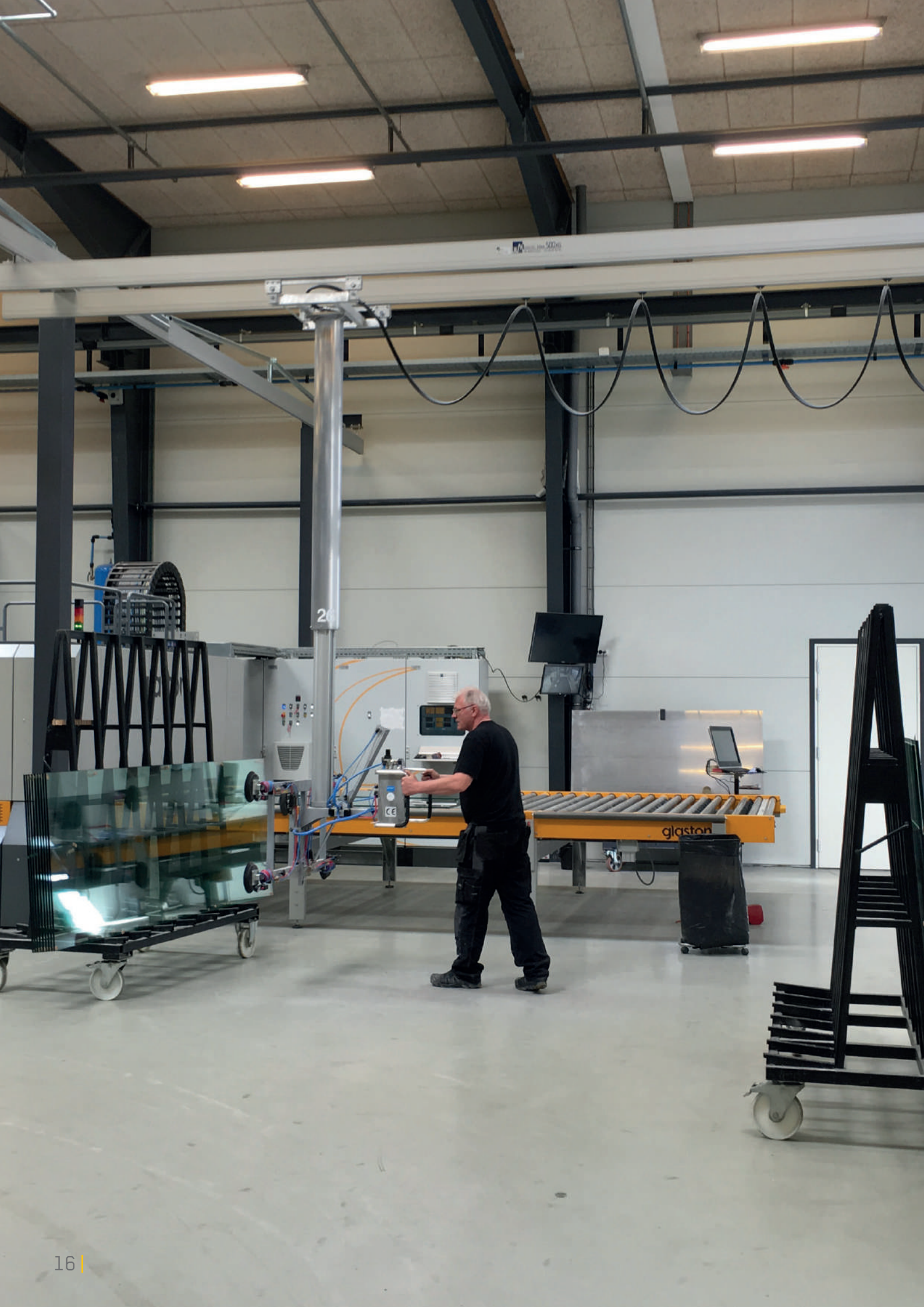


Vacuum hoses are used in crane systems with vacuum lifters.



Coated cable contains both pressurized air and the electrical cables required for the electrical hoist to run. This is used where a pneumatic lifting yoke hangs in the hoist.

Description	Inventory no.	Unit	
PVC vacuum hose Ø25 P388	VL702735	Meters	
PVC vacuum hose Ø40 P388	1294057	Meters	
PVC vacuum hose Ø51 P388	571869	Meters	
Coated cable complete 380V JLM5	TG02021-12/9JS	Meters	
Flat cable 5 x 1,5mm ²	L320009	Meters	









Brackets for rafter

Brackets for Mini, Mega, Maxi rails



Description	Inventory no.	Fits on	Unit	Weight in kg
Bracket 100 x 8 mm	07103511	Mini, Maxi, Mega	Pair	1
Bracket 110 x 8 mm	07103521	Mini, Maxi, Mega	Pair	1
Bracket 120 x 8 mm	07103531	Mini, Maxi, Mega	Pair	1,1
Bracket 130 x 8 mm	07103541	Mini, Maxi, Mega	Pair	1,1
Bracket 140 x 8 mm	07103551	Mini, Maxi, Mega	Pair	1,1
Bracket 150 x 8 mm	07103561	Mini, Maxi, Mega	Pair	1,2
Bracket 160 x 8 mm	07103571	Mini, Maxi, Mega	Pair	1,2
Bracket 170 x 8 mm	07103581	Mini, Maxi, Mega	Pair	1,3
Bracket 180 x 8 mm	07103591	Mini, Maxi, Mega	Pair	1,3
Bracket 190 x 8 mm	07103601	Mini, Maxi, Mega	Pair	1,3
Bracket 200 x 8 mm	07103611	Mini, Maxi, Mega	Pair	1,4
Bracket 200 x 15 mm	L0510050245	Mini, Maxi, Mega	Pair	1,5

Brackets for rafter

Brackets for Magnum



Bracket mounted in an angle on a rail.

Description	Inventory no.	Fits on	Unit	Weight in kg
Bracket 100 x 8 mm	L151037038	Magnum	Pair	1
Bracket 110 x 8 mm	L151037039	Magnum	Pair	1
Bracket 120 x 8 mm	L151037040	Magnum	Pair	1
Bracket 130 x 8 mm	L151037041	Magnum	Pair	1,1
Bracket 140 x 8 mm	L151037042	Magnum	Pair	1,1
Bracket 150 x 8 mm	L151037043	Magnum	Pair	1,2
Bracket 160 x 8 mm	L151037044	Magnum	Pair	1,2
Bracket 170 x 8 mm	L151037045	Magnum	Pair	1,2
Bracket 180 x 8 mm	L151037046	Magnum	Pair	1,3
Bracket 190 x 8 mm	L151037047	Magnum	Pair	1,3
Bracket 200 x 8 mm	L151037048	Magnum	Pair	1,4
Bracket 200 x 15 mm	151037057	Magnum	Pair	1,5
Adjustable suspension HEA 180. Made to order.	L151037018	Magnum	Pair	5,6
Adjustable suspension HEA 240. Made to order.	L151037019	Magnum	Pair	6,5



Brackets for rafter

Other brackets



IPE bracket mounted with a Uni-suspension.

Description	Inventory no.	Fits on	Unit	Weight in kg	
Bracket IPE 100 complete	L0510050174	Mini, Maxi, Mega	Piece.	1,2	
Bracket IPE 120 complete	L0510050184	Mini, Maxi, Mega	Piece.	1,4	
Bracket IPE 140 complete	L0510050175	Mini, Maxi, Mega	Piece.	1,6	
Bracket IPE 160 complete	L0510050176	Mini, Maxi, Mega	Piece.	1,9	
Bracket IPE180 complete	L0510050177	Mini, Maxi, Mega	Piece.	2,1	
Bracket concrete rafter 100	L0510050046	Mini, Maxi, Mega	Piece.	1,4	
Bracket concrete rafter 100	L151037053	Magnum	Piece.	1,4	
Bracket concrete rafter 90g	L0510050072	Mini, Maxi, Mega	Piece.	1,4	
Bracket concrete rafter 120	L0510050153	Mini, Maxi, Mega	Piece.	1,4	
Bracket concrete rafter 120	L0510050154	Mini, Maxi, Mega	Piece.	1,4	
Bracket for hammer rafter	L0510050074	Mini, Maxi, Mega	Piece.	1,3	

Uni-suspension






Uni-suspension is used for distancing the crane system from the ceiling or rafters. Uni-suspension is adjusted during the installation. In a complete Uni-suspension, a fishplate and swan-neck is used.

Description	Inventory no.	Fits on	Unit
Uni-suspension Magnum with 2 m C-Profile	L1510379-10	Mini, Maxi, Mega, Magnum	Piece.
Uni-suspension Magnum with 3 m C-Profile	L1510379-11	Mini, Maxi, Mega, Magnum	Piece.
Uni-suspension Mini/Maxi/Mega with 2 m C-Profile	L0510050093	Mini, Maxi, Mega, Magnum	Piece.
Uni-suspension Mini/Maxi/Mega with 3 m C-profile	L0510050094	Mini, Maxi, Mega, Magnum	Piece.

Contact JLM if other lengths are needed.




Fishplate, ceiling mount and adjustable suspension

Description	Inventory no.	Fits on	Unit	Weight in kg	
Fishplate for suspension 25 x 10 x 120 mm	L0510050129	Mini, Maxi, Mega	Piece.	0,2	
Fishplate for suspension 25 x 5 x 80 mm	L0510050027	Mini, Maxi, Mega	Piece.	0,1	
Fishplate for suspension	L151037031	Magnum	Piece.	0,6	

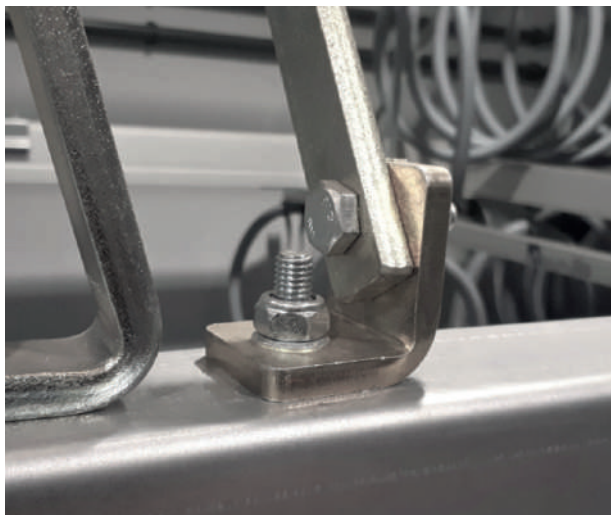
Swan-neck



The swan-neck is used with the Uni-suspension or directly for suspension of the crane system.

Description	Inventory no.	Fits on	Unit	Weight in kg	
Swan neck 25 x 10 x 600 mm	L0510050130	Mini, Maxi, Mega	Piece.	1,2	
Swan neck, short model	L0510050172	Mini, Maxi, Mega	Piece.	0,4	
Swan neck	L151037030	Magnum	Piece.	1,2	

Angles



Example on angle installed on a rail.






Angle installed on a wall.

Description	Inventory no.	Fits on	Unit	Weight in kg	
Angle with slot	L0510050055	Mini, Maxi, Mega, Magnum	Piece.	0,3	
Small angle	L0510050024	Mini, Maxi, Mega, Magnum	Piece	0,2	
Mid angle 170 x 110	L0510050062	Mini, Maxi, Mega, Magnum	Piece	1,5	
Large angle 280 x 110	L0510050073	Mini, Maxi, Mega, Magnum	Piece	2,1	
Angle for Magnum	L151037024	Magnum	Piece	0,5	

Brackets



Description	Inventory no.	Fits on	Unit	Weight in kg	
Bracket for suspension, 90 degrees	L151037034	Magnum	Piece.	0,9	
Bracket for suspension	L0510050037	Mini, Maxi, Mega	Piece.	0,3	
Bracket for suspension	L15103709	Magnum	Piece.	0,9	

Terms and conditions

Extend

1.1 These general terms and conditions shall apply to all products and services provided by JLM teknik ApS (hereinafter "JLM teknik"). Every buyer of products and/or services from JLM teknik is in these terms and conditions called the "customer". Notwithstanding anything to the contrary, including in documents prepared by the customer, the customer's standard terms or the customer's orders, these general terms and conditions shall take precedence unless the parties have expressly agreed otherwise in writing.

The deliverance

2.1 JLM teknik shall provide the specified products and/or services (hereinafter the "delivery"), as per the separately agreed on contract (hereinafter "the agreement"). JLM teknik must be entitled to hire subcontractors to perform the Delivery.

2.2 If the delivery requires delivery of products and/or services from a third party, the customer must enter into a separate agreement with the third party for the supply of such products and/or services at his own expense.

Specifications

3.1 The delivery shall only comply with the specifications expressly and in writing confirmed by JLM teknik. Contents of documentation, illustrations, drawings, specifications of weight and dimensions, etc. should be considered as indicative only. JLM teknik must be entitled to change the confirmed specifications provided that the functionality of the delivery is not limited.

3.2 Technical documents and drawings for use in making the delivery, which are left to the buyer before or after the conclusion of the agreement, remain the property of the seller and may not be used by the buyer or copied, reproduced, transferred to or otherwise brought to the third party without his consent.

The customer's contribution

4.1 The Customer shall make available to JLM teknik free of charge all information and any other materials that may be appropriate for the execution of the delivery.

4.2 When performing work on the customer's premises, the customer is obliged to ensure that JLM teknik staff/subcontractors have appropriate and legal working conditions and that assembly can be carried out in one go, and the customer must reasonably make staff available free of charge to assist JLM teknik staff/subcontractors. Prior to commencement of installation, the customer must notify JLM teknik in writing of the safety regulations applicable to personnel at the installation site.

4.3 It is clarified that the customer's free contribution - if applicable - must include:

4.3.1. All construction work, including but not limited to building calculations, pillar casting, the provision of free transport roads with the necessary load capacity, and the delivery and laying of necessary cover plates in transport roads. The customer is responsible for compliance with the building objectives. Concrete floors at the installation site must be molded, durable and cleaned prior to installation. Lift and truck must be provided as stated in the offer.

4.3.2. Electrical installations, including but not limited to the supply of necessary current and protective conductor from circuit breaker with fuses to approx. 1 meter from one end of the crane rail before installation start, costs for the installation and consumption of electricity for lighting and tools, including the establishment of necessary sockets for installation and commissioning.

4.3.3. Water and propulsion, including compressed air and electric power, should be appropriately available free of charge for JLM teknik.

4.3.4. A load with the weight prescribed for the work load by the Labor Inspectorate.

4.4 If the customer fails to fulfill his obligations under clauses 4.1 to 4.3, the customer must pay for any extra time and/or other costs that JLM teknik may incur as a result of the delay, and JLM teknik in this situation is entitled to postpone its service.

4.5 The Customer must appoint a named employee who is responsible for the contact with JLM teknik and whom JLM teknik can contact in connection with any question related to the agreement. The employee concerned must be entitled to enter into binding agreements on behalf of the customer.

Delivery and acceptance of services

5.1 Unless otherwise agreed in writing, the delivery of Ex Works (Incoterms 2010) will be delivered at JLM teknik's address. This also applies even if JLM teknik is subsequently responsible for installing the delivery. 5.2 Any delivery time indicated by JLM teknik is an approximate time and therefore not binding unless a fixed delivery time for the delivery or part thereof is expressly agreed in writing. JLM teknik cannot be held responsible for delays due to delays in deliveries from JLM teknik's subcontractors.

5.3 If it is agreed that the customer must accept the delivery by a test procedure, the customer is obliged to submit written confirmation of acceptance to JLM teknik as soon as possible. The Customer shall be deemed to have accepted the Delivery at the earliest of the following times: (a) Customer's written acceptance; (b) the expiration of any test period without specifying significant deficiencies, deficiencies to be remedied; or (c) the Customer's first operational use of the Delivery or any part thereof.

5.4 Unless otherwise agreed, the delivery is considered factory-sold. However, if the sold material is installed by JLM teknik, the risk will not pass until delivery.

Remuneration and expenses

6.1 Unless otherwise agreed in writing, the calculation of the JLM teknik's remuneration for the portion of the service provided shall be based on time spent (including any travel time) and JLM teknik applicable hourly rates. All prices are exclusive of VAT and other taxes, including any customs duties. For work outside normal working hours, in addition to normal remuneration, JLM teknik may require payment in accordance with JLM teknik's applicable rates at any time.

6.2 In addition to the above remuneration, JLM teknik must be entitled to receive payment for all costs related to the delivery of the product, including costs related to transport, accommodation and dining.

6.3 Unless otherwise agreed in writing, JLM teknik's remuneration and outlay are invoiced every 14 days. Payment terms are 14 days from date of invoice. If late payment occurs, interest will accrue at 1.5% per commenced month until payment is received by JLM teknik. The customer is obliged to make effective payment and thus cannot offset any claim against JLM teknik that is not recognized by JLM teknik.

Complaints

7.1 The Customer shall, without undue delay and within one week of delivery, review the delivered for any defect to: JLM teknik ApS, Erhvervsparken 2, 9500 Hobro, Tel. +45 9857 6060.

7.2 If the customer is of the opinion that the delivered is defective, the customer must give written notice to JLM teknik thereof without undue delay. This notice must specify the alleged deficiencies and the consequences for the customer of the alleged deficiencies. If the complaint is not timely, the customer loses any right to object to the defect against the delivered.

7.3 Any complaint of defects of any kind shall be given within 3 months of delivery. If this time limit is not complied with, the customer also loses any right to claim deficiencies against the delivered.

7.4 JLM teknik's liability for defects and deficiencies shall in all situations be limited to - at JLM teknik's choice - delivery, remedy, or proportional refusal. The Customer shall have no other default power and thus shall not be entitled, among other things, to compensation for operating losses or other indirect losses.

7.5 JLM teknik shall not be responsible for the achievement of the customer's expected results unless JLM teknik has written and expressly assumed the risk of such expected results being achieved.

Confidentiality

8.1 JLM teknik shall keep confidential any confidential information received by JLM teknik about the customer's business. 8.2 The Customer must keep confidential any confidential information received by the Customer about the business of JLM teknik. All matters relating to the delivery that are not immediately available to the public shall be considered confidential information. 8.3 The parties' confidentiality obligations shall remain in force even after the termination of the agreement in question.

Cancellation

9.1 The Customer is only entitled to cancel the agreement if JLM teknik is in material breach of its obligations under the agreement. Defaults, including delays and deficiencies, can only be considered significant if (in the case of delay) the delay results in a substantial delay of the total agreement by more than 20 working days and if the delayed services have not been performed within 40 working days after the customer has sent a written requirement to do so with a registered letter; or (in the case of defects) a material defect has not been rectified or rectified within 60 working days after the customer has submitted a written request to this effect by registered letter; or (in the case of other breaches), the breach relates to a material relationship and the breach has not been terminated within 60 business days of the customer submitting a written request to this effect by registered letter. 9.2 A written claim submitted pursuant to the preceding paragraph shall only be able to form the basis for a subsequent termination of the agreement if it contains a detailed description of the breach and indicates that failure to comply with the requirement may result in the termination of the agreement. Such cancellation shall not justify cancellation of services already provided and / or other agreements between the parties.

Limited liability

10.1 Under no circumstances can JLM teknik's total accumulated liability exceed the lower of the following amount: 1) the total payment made by Customer to JLM teknik under the agreement(s) or 2) DKK 100,000. This amount constitutes the total accumulated liability that JLM teknik may incur towards the customer (including companies affiliated with or associated with the customer) under all the agreements, regardless of the background and the degree of negligence of JLM teknik. Under no circumstances is JLM teknik liable for any indirect loss or any indirect damage or loss of data, including operating loss or loss of profit, regardless of the background of the claim and the degree of negligence of JLM teknik.

Product liability

11.1 JLM teknik is solely responsible for product liability in accordance with the preceptive provisions of the Danish Product Liability Act. JLM teknik disclaims any other product liability of any kind. 11.2 The Customer shall, without undue delay, notify JLM teknik in writing of any damage to the object(s) or person(s) caused by defective products, any third party claim based on such damages and/or any risk of such damages arising.

11.3 To the extent that JLM teknik is liable to third parties, the Customer shall indemnify JLM teknik to the same extent as JLM teknik's liability is limited in accordance with this Clause 11.

Intellectual rights

12.1 The Customer acquires a non-exclusive right to use the intellectual property that may arise in connection with the delivery. JLM teknik has all other rights to the intellectual property that may arise in connection with the delivery.

12.2 All drawings, estimates, descriptions or other materials to be submitted when submitting tenders or in connection with the Delivery are the property of JLM teknik and may not be reproduced, submitted to or otherwise used by JLM teknik without prior written permission from other parties. from maintenance and service delivery. Drawings, etc. which JLM teknik has performed for the purpose of submitting tenders must be returned on demand and all copies thereof destroyed.

Ownership

13.1 The ownership of the delivery remains at JLM teknik until the full purchase price has been paid. The customer is, until the entire purchase price is paid, not entitled to rent, lend, pledge or otherwise dispose of the delivery.

Return of products

14.1 The customer can only return products purchased from JLM teknik after prior written agreement in each case. If JLM teknik accepts that the customer can return a product, JLM teknik will charge a fee for such a return.

Marketing

15.1 JLM teknik is entitled to use the customer and the delivery as a reference, including with a brief description of the delivery.

Force majeure

16.1 If one of the parties - in whole or in part - becomes unable to fulfill its obligations under the agreement due to circumstances beyond its control, including but not limited to natural disasters, government actions, omissions or regulations, judgments, fire, storm, accidents, war, civil unrest, strikes and lockouts, illness, death, dismissal of or from employees or JLM teknik ApS, Erhvervsparken 2,9500 Hobro, Tel. +45 9857 6060. If there is no possibility of transport, the party concerned, to the extent that the party is affected by such a cause, must be exempt from fulfilling the obligation as long as that cause exists.

Laws and jurisdiction

17.1 Any dispute between JLM teknik and the customer must be settled under Danish law. The United Nations Convention on International Purchasing Law (CISG) / International Law on Purchasing Law does not apply in the relationship between the Customer and JLM teknik. Disputes must be settled with the Copenhagen City Court as agreed venue.

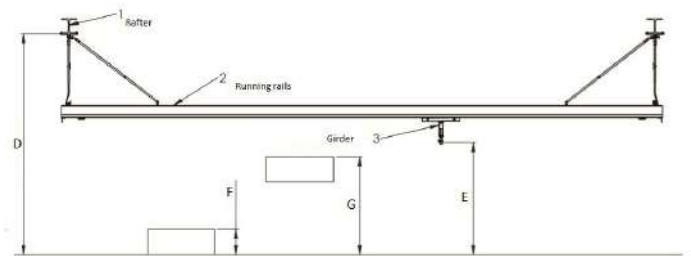
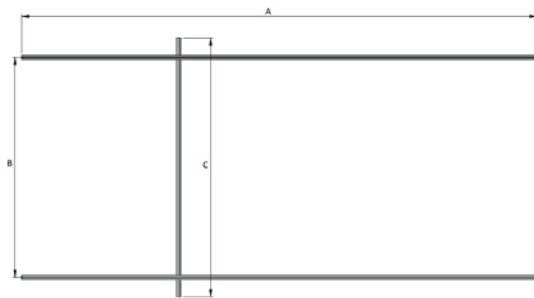
Disclaiming

We reserve the right to make improvements of both structural, safety and sizing that will help the final product meet the standards that have been formed. Therefore, the product in this catalog may differ from the delivered product, however you, as a customer, will be made aware of this. All rights reserved, including translations.

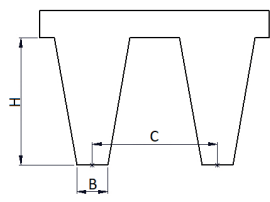
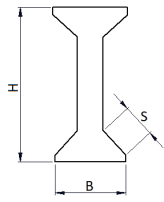
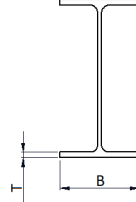
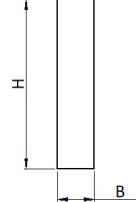
We make reservations for printing errors and discontinued or sold out items. Images may be edited (light, background)

Qoute form

Case:	
Costumer:	
Contact person::	
Seller::	
Date:	
Area:	

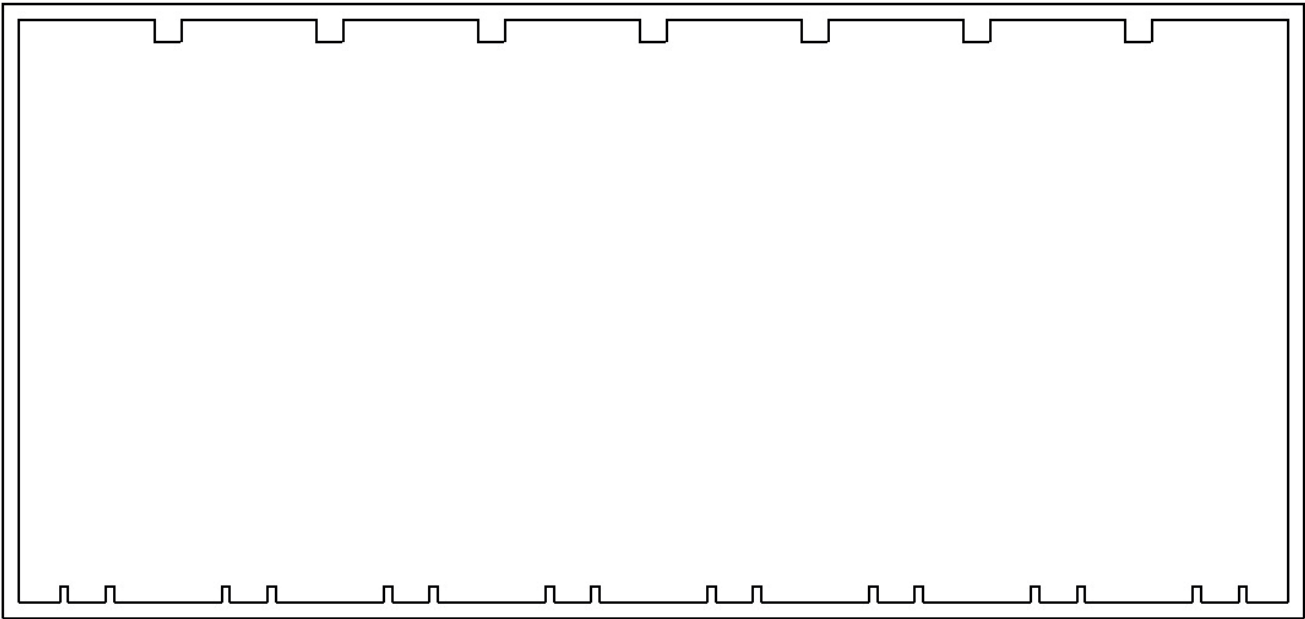
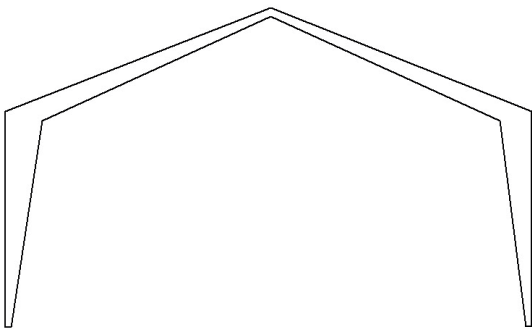
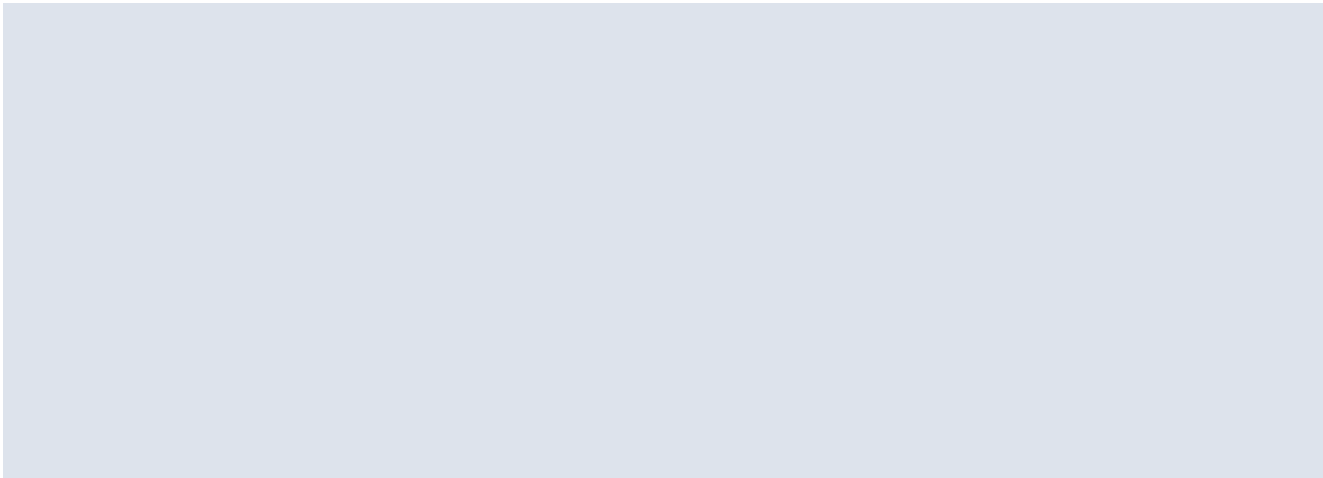


Running rail (A):		Height to rafter (D1):	
Distance between rails (B):		Height to rafter (D2):	
Length of girder (C):		Height to girder (E):	
WLL in KG.		Pick height 1 (F):	
Type of trolleys:		Pick height 2 (G):	

Types of rafter::			
TT	Hammer	Steel rafter	Square
			
H =	H =	T =	H =
B =	B =	B =	B =
C =	S =		

Center distance between rafters:			
Running rails relative to rafters:	Parallel		Perpendicular
Are there photo or video of the assignment:	Yes		No
Are there a drawing of the building:	Yes		No

Note/drawing



Outlet location:  Outlet

 Airduct

Conditions:  Pipe

 Cable tray

 Gate

 Window

 Door

 Lamp



JLM teknik
Erhvervsparken 2, 9500 Hobro
Phone: +45 9857 6060
info@jlmteknik.dk

www.jlmteknik.dk